

ACCURATE TEMPERATURE CONTROL IN WATERLESS PRINTING WITH IRt/c SENSORS: HOW TO INCREASE PRINTING SPEED

By Francesco Pompei, Exergen Corporation

At the heart of waterless printing is the requirement for accurate temperature control of the ink roller system due to the importance of maintaining proper viscosity. A significant barrier to improvement in the quality of ink temperature control for waterless printing systems is the delay caused by the mass of the roller, especially when increasing speeds.

Water-cooled systems are particularly subject to this delay since the roll is cooled from the inside, and the entire mass of the roll must change temperature in order to control the surface, where the ink properties are, of course, determined. Air-cooled systems are less influenced by the delay, but still require an optimal control strategy to maximize speed.

At the heart of the temperature control are non-contact infrared sensors that are designed specifically for the waterless printing application. One such model is the IRt/c-WP series from Exergen, which is the most accurate available. The discussions below use these sensors.

Water-Cooled Systems

A change in temperature on the cooled roller outside surface T_s , will be sensed by the IRt/c infrared sensor within a tenth of a second, and the correction to the water cooling temperature T_w will occur within a few seconds. However, the entire mass of the roll must change temperature from the inside-out before the surface can change and thus correct the temperature of the ink – a process requiring several minutes. The several minutes that the temperature is incorrect may cause reduced quality printing, and thus prevent operation at higher speeds.

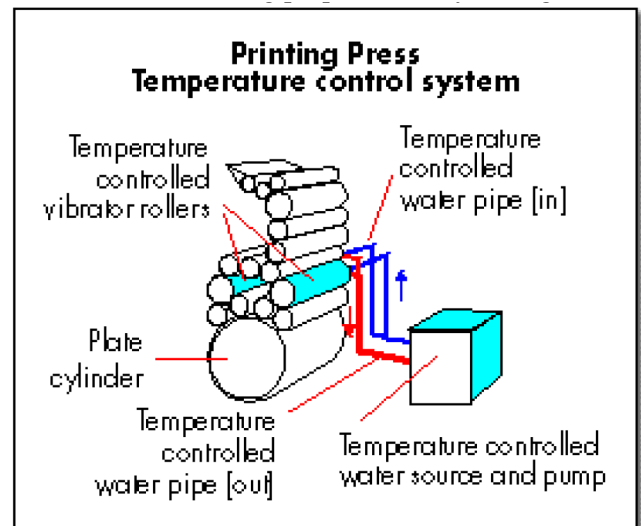


Figure 0 system. Systems and presses will vary in terms of the vibrators which receive temperature

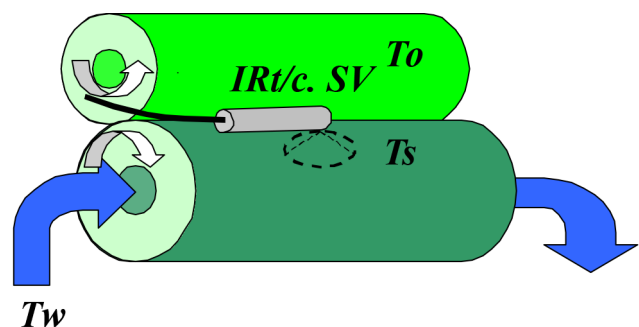


Figure 2. Cooling roll controlled by IRt/c sensing inked surface temperature.

Exergen Corporation office:

USA
400 Pleasant Street
Watertown, MA 02472
Tel: +1 617 923 9900 press 4 for industrial
Fax: +1 617 923 9911

Exergen Industrial International/OEM Sales office:

Clever IR
The Netherlands
Pastoor Clercxstraat 26
5465 RH Veghel
Tel: +31 (0)413 376 599

industrial@exergen.com
www.exergen.com

ACCURATE TEMPERATURE CONTROL IN WATERLESS PRINTING WITH IRT/c SENSORS: HOW TO INCREASE PRINTING SPEED

The remedy for this problem is the application of the *Speed Boost Equation*™ (see www.exergen.com for details):

$$V^* = \frac{T_\infty - T_s}{T_s - T_o} \quad \text{Eq. 1}$$

where V^* is relative speed, T_∞ is the temperature of the energy source, T_s the temperature of the surface, and T_o the temperature of the feed material into the process. For the example in the diagram, the cooling water T_w is the energy source.

Accordingly, if the speed of the roll V is measured and available to the temperature control system, the Speed Boost Equation then becomes:

$$V = K \frac{T_w - T_s}{T_s - T_o} \quad \text{Eq. 2}$$

where K is a proportionality constant.

Then the control equation for the water temperature T_w becomes:

$$\begin{aligned} T_w &= \frac{V}{K} (T_s - T_o) + T_s \\ &= \left(1 + \frac{V}{K}\right) T_s - \frac{V}{K} T_o \end{aligned} \quad \text{Eq. 3}$$

Accordingly, any change in V should be accompanied by an immediate change in T_w in accordance with the above equation. In the same manner, a control loop gain in response to a change in T_s at constant V can be immediately established by selecting $(1+V/K)$, taking care to account for the offset $((-V/K)*T_o)$. This strategy assumes that the ink feed temperature T_o is sufficiently constant to be treated as constant.

Adding the control loop PID contribution to correct the value of T_w in response to minor perturbations, we end with which is the governing control equation.

$$T_w = \frac{V}{K} (T_s - T_o) + T_s + \text{PID}(T_s - T_{\text{setpoint}}) \quad \text{Eq. 4}$$

Exergen Corporation office:

USA
400 Pleasant Street
Watertown, MA 02472
Tel: +1 617 923 9900 press 4 for industrial
Fax: +1 617 923 9911

Exergen Industrial International/OEM Sales office:

Clever IR
The Netherlands
Pastoor Clercxstraat 26
5465 RH Veghel
Tel: +31 (0)413 376 599

industrial@exergen.com
www.exergen.com

TN-100-1-EN

ACCURATE TEMPERATURE CONTROL IN WATERLESS PRINTING WITH IRt/c SENSORS: HOW TO INCREASE PRINTING SPEED

Variable Feed Roll Temperature T_o

As is the case in many high performance installations, the feed roll temperature is not always constant, since friction from the rolls will gradually warm the rolls. Accordingly, to further improve performance, the addition of a second IRt/c is recommended to monitor the feed roll temperature T_o . With this additional sensor, equation 4 is again employed, but T_o is treated as variable and its value measured by a second IRt/c. This measure is recommended when the quantity in the denominator of equation 2 ($T_s - T_o$) is less than ~ 10 C, and is greater than the quantity in the numerator ($T_w - T_s$). This situation will exist as the speed V is increased and the heat transfer characteristics of the roll are improved.

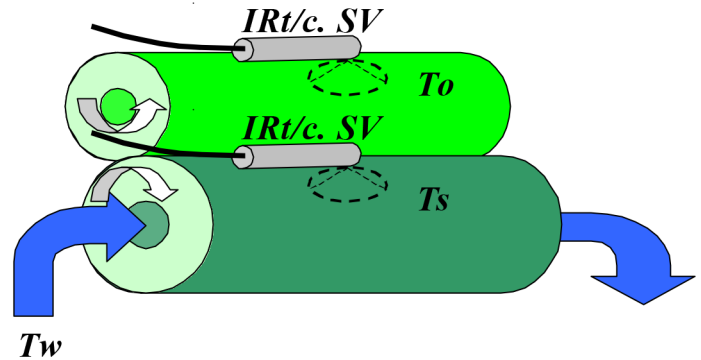


Figure 3. Higher performance cooling system with both T_s and T_o monitored with IRt/c sensors.

Maximal Speed and Performance Strategy

For maximum print speeds at maximum quality, the quantities ($T_w - T_s$) and ($T_s - T_o$) must be accurately controlled under all conditions. The PID feedback control is not sufficient since at maximum speeds the feedback requires significant time to respond due to the thermal lag of the roller from the inside to the outer surface, and will produce ink temperature errors and thus poor quality.

The IRt/c sensors provide an elegantly simple and robust method of achieving the maximal accuracy by employing their inherent thermocouple character. Rewriting equation 4:

$$(T_w - T_s) = \frac{V}{K}(T_s - T_o) + PID(T_s - T_{setpoint}) \quad Eq. 5$$

Exergen Corporation office:

USA
400 Pleasant Street
Watertown, MA 02472
Tel: +1 617 923 9900 press 4 for industrial
Fax: +1 617 923 9911

Exergen Industrial International/OEM Sales office:

Clever IR
The Netherlands
Pastoor Clercxstraat 26
5465 RH Veghel
Tel: +31 (0)413 376 599

industrial@exergen.com
www.exergen.com

TN-100-1-EN

ACCURATE TEMPERATURE CONTROL IN WATERLESS PRINTING WITH IRt/c SENSORS: HOW TO INCREASE PRINTING SPEED

we see that the critical temperatures for control are the differences ($T_w - T_s$) and ($T_s - T_o$), with the PID feedback a small trim on the setpoint of T_s . From basic thermocouple characteristics we can directly measure these temperature differences with accuracy of order 0.1C by simply wiring IRt/c's differentially as common thermocouples.

Further, the feed water temperature T_w may be measured by an ordinary immersion thermocouple, then wired in series with an IRt/c monitoring T_s to produce a direct signal for ($T_w - T_s$).

The end result from the application of the Speed Boost Equation is balanced cooling input that correctly adjusts the flow of heat to maintain consistent balance in the heat into and out of the roll surface. With this balance, temperature control is maintained accurately, and speed may be increased to maximal values permissible by the press without loss of quality.

Air-Cooled Systems

Air cooling systems have the significant advantage that there is less delay in response to a cooling load change, since only the immediate surface must change temperature. However, the roll does require re-establishment of distribution of temperature around the roll as conditions change, especially speed, and therefore optimal control requires the Speed Boost method.

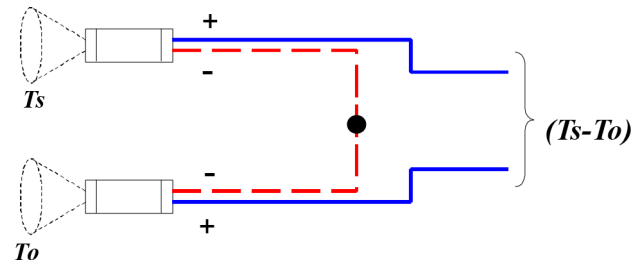


Figure 4. IRt/c's wired differentially to produce a direct and accurate signal for ($T_s - T_o$).

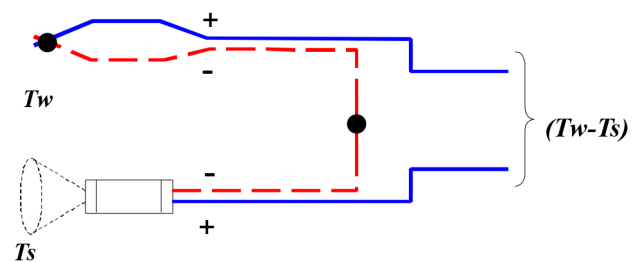


Figure 5. IRt/c and thermocouple wired differentially to produce a direct and accurate signal for ($T_w - T_s$).

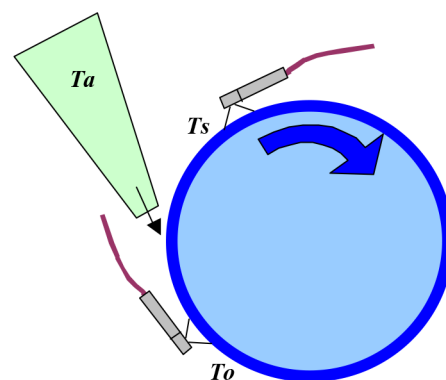


Figure 6. Air-cooled arrangement showing two IRt/c's monitoring the roll surface temperature just prior to the air jet (T_o) and just after the air (T_s). The air supply temperature (T_a) can be monitored with a standard thermocouple.

Exergen Corporation office:

USA
400 Pleasant Street
Watertown, MA 02472
Tel: +1 617 923 9900 press 4 for industrial
Fax: +1 617 923 9911

Exergen Industrial International/OEM Sales office:

Clever IR
The Netherlands
Pastoor Clercxstraat 26
5465 RH Veghel
Tel: +31 (0)413 376 599

industrial@exergen.com
www.exergen.com

ACCURATE TEMPERATURE CONTROL IN WATERLESS PRINTING WITH IRT/c SENSORS: HOW TO INCREASE PRINTING SPEED

Applying again eq. 1,

$$V^* = \frac{T_\infty - T_s}{T_s - T_o}$$

and referring to the temperatures in Figure 6, the equation can be re-written as

$$V = K \frac{T_a - T_s}{T_s - T_o} \quad \text{Eq. 6}$$

where K is the proportionality constant.

Then the control equation for the air temperature T_a becomes:

$$\begin{aligned} T_a &= \frac{V}{K}(T_s - T_o) + T_s \\ &= \left(1 + \frac{V}{K}\right)T_s - \frac{V}{K}T_o \end{aligned} \quad \text{Eq. 7}$$

Accordingly, any change in V should be accompanied by an immediate change in air temperature T_a in accordance with the above equation.

Adding the control loop PID contribution to correct the value of T_a in response to minor perturbations, we end with

$$T_a = \frac{V}{K}(T_s - T_o) + T_s + PID(T_s - T_{setpoint}) \quad \text{Eq. 8}$$

which is a form of governing control equation that can be applied. The differential IRT/c wiring illustrated in Figures 4 and 5 is the method of choice to assure highest possible performance in controlling for quality and speed. By adding the air temperature T_a as a thermocouple, and a second IRT/c for T_s , then the governing equation becomes

$$(T_a - T_s) = \frac{V}{K}(T_s - T_o) + PID(T_s - T_{setpoint}) \quad \text{Eq. 9}$$

and the performance is the highest possible speed with the best possible quality.

Exergen Corporation office:

USA
400 Pleasant Street
Watertown, MA 02472
Tel: +1 617 923 9900 press 4 for industrial
Fax: +1 617 923 9911

Exergen Industrial International/OEM Sales office:

Clever IR
The Netherlands
Pastoor Clercxstraat 26
5465 RH Veghel
Tel: +31 (0)413 376 599

industrial@exergen.com
www.exergen.com

TN-100-1-EN